

ACTIVESHOP[®]

Instructions for use

MARATHON K38/ K38 PRO MILLING MACHINE



Importer:

ACTIVESHOP Ltd.

8b Graniczna St., building

DC2A 54-610 Wrocław,

Poland

www.activeshop.com.pl

Rev. A/04/2024



Product description

The portable milling machine from the Korean company Saeyang is the perfect solution for providing mobile cosmetology services.

You can use this milling machine at your client's home, on the road or anywhere you want, and best of all, you don't need to plug it in.

Facilities you'll appreciate

Operation of the device is surprisingly simple. The speed control knob allows you to efficiently control the intensity of rotation (up to 35 thousand). The digital display shows

The most important information, such as speed or battery level. The device is lightweight, the whole thing will fit into a handy purse. The head is pleasant to work with, as it is slim and its vibrations are neutralized.

TWIST-LOCK: Easy cutter change

The TWIST-LOCK handle is a solution that allows you to change cutters quickly and easily in one motion. Turn left to unlock, loosen and replace the cutter. Turn right to close the lock and secure the cutter.

RECOMMENDATIONS:

1. Remember never to drop the milling machine or head, this can cause, among other things, damage to the milling machine, which will affect the life of the motor.
2. Do not allow water and other liquids to get inside the device.
3. Clean the device regularly to prevent the accumulation of dirt, dust and other undesirable substances. Accumulation of the above, can lead to malfunction of the device or even damage to the equipment.
4. Prevent dust or other harmful elements from getting into the plug, base or head by using dust absorbers.
5. Never replace cutters while the milling machine is running. To change the cutter, turn off the milling machine. After changing the cutter, make sure TWIST-LOCK is properly closed.
6. Connect the router to the outlet only after making sure that all wires are installed correctly and safely.
7. We recommend the device only for use by professionals.
8. The foot control switch cable plug must be well connected in the designated place.
9. Make sure that the cutter you want to use was not bent, asymmetrical or damaged. Always use a good quality cutter.
10. Before each use, make sure that the device is charged from a source with the correct voltage rating.
11. It is forbidden to disassemble or repair the equipment. For repair, contact the distributor from whom the equipment was purchased or an authorized service center.

Battery warning

- The device includes a rechargeable Li-ion battery
- Battery life is limited, depends on operating conditions

Device features:

Brushless (K38 Pro)/brush motor (K38) Max. RPM:
35.000

Operating time: max 8 hours

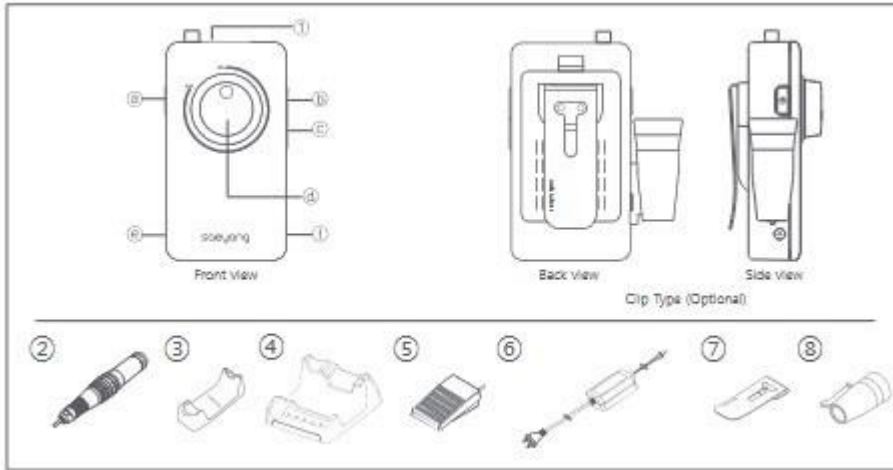
Battery level display

Two ways to control speed: dial + digital display

Left rotation

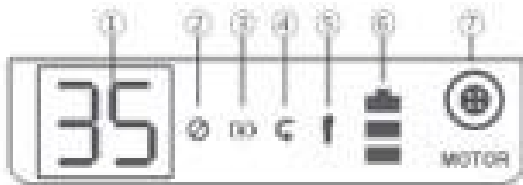
Right/

Specification and description of the components



1. Milling machine base
 - a. Power/head speed control knob
 - b. Left/right turn button
 - c. Pause/foot control button
 - d. Speed potentiometer
 - e. Foot control connector
 - f. Charging connector
 - g. Charging diode
2. Head
3. Head stand (optional)
4. Stand (optional)
5. Foot control switch (optional)
6. Charger
7. Clip (optional)
8. Head holder (optional)

LCD display



1. Switch on/head speed (0-35 thousand revolutions)
2. Overload warning (glows orange in case of overload)
3. Battery charging
4. Right/left-hand rotation
5. Pause function
6. Battery charge level
7. Head connector

Installation and operation Charging the battery

1. Connect the charger plug to the device connector.
2. When the battery is charging, the charging Led light will illuminate red.

3. When turning on the machine/changing from foot control to manual control, reduce the head speed to a minimum with the potentiometer. Otherwise, the milling machine will not turn on.

When the battery charges, the Led light will turn green.

Battery charge display



Level: Low Medium Fully charged

Do not charge the device during operation.

Remember to charge your device only with the original charger.

After charging your device, disconnect it from the charger.

Manual operation:

1. Connect the head with the device.
2. Turn the power button clockwise.
3. The display will show the head speed.

Foot service

1. Connect the foot switch to the connector signed FOOT.
2. Press the pause/foot control button.
3. The FOOT light will come on in the display.
4. In foot control mode, the head will operate at the speed set on the display using the speed dial.

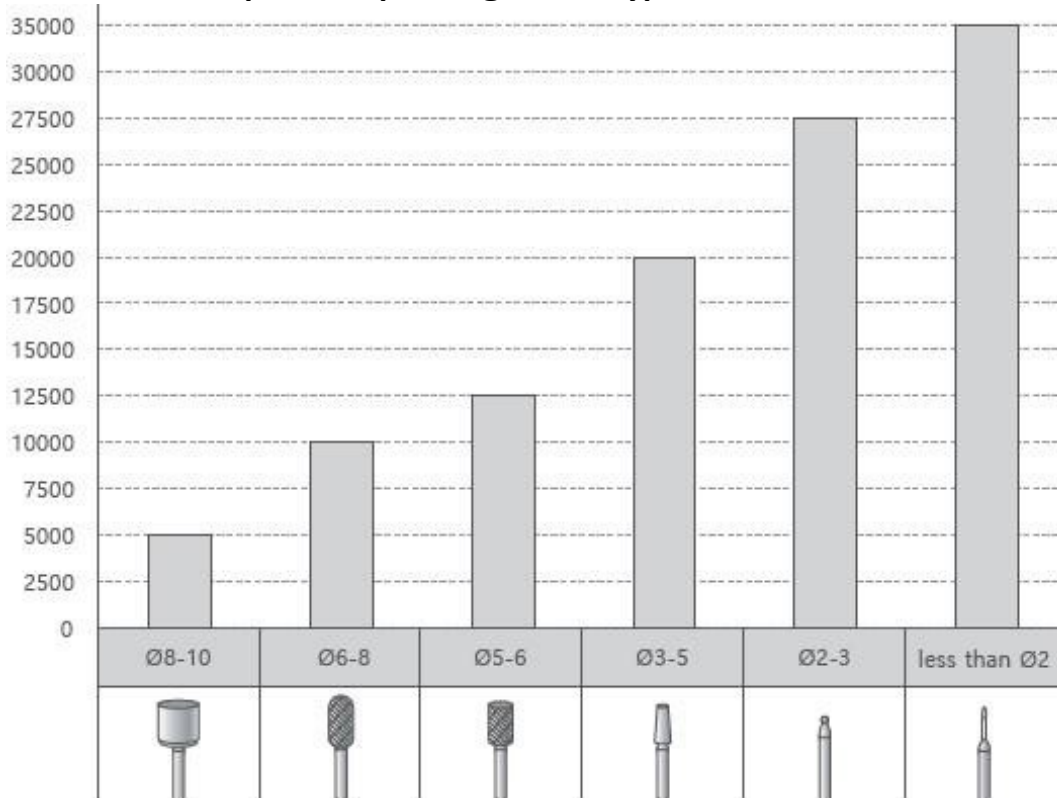
Cutter insertion/extraction

- To pull out the cutter, turn the TWIST-LOCK (the movable ring at the shank of the cutter) clockwise until you hear the characteristic "click" and pull out the cutter.
- To attach the cutter, turn TWIST-LOCK counterclockwise until you hear a click.
- Remember to TWIST-LOCK clean before you change the cutter.
- Make sure that the cutter you want to use was not bent, asymmetrical or damaged. Always use standard cutters.

Troubleshooting

Problem	Cause	Action
Although the base is charged, the head does not work	Incorrect connection of the body with the head wire	Connect the head cable to the device correctly
	Damage in the motor cable	Replace the cable
	Worn carbon brushes (K38 only)	Replace brushes
	Head problem	Contact the service
	RPM potentiometer has not been set to minimum	Turn the speed potentiometer to minimum, then set the desired head rotation
The head suddenly stopped working	Base overheated or overloaded. Open TWIST- LOCK of the cutter	Check point 6.

Recommended speeds depending on the type of cutter:



Technical data:

Charging voltage	K38- 12V, K38 PRO - 12.6V
Weight	K38 - 290g, K38 PRO - 253g.
Dimensions	67x128x30mm
Maximum operating time	8 hours
Maximum battery charging time	3 hours

SECURITY MEASURES

1. The device is a professional equipment for use in beauty parlors. Operation of the device only by qualified cosmetic personnel allows to avoid undesirable consequences during the treatment.
2. Do not disassemble the device or attempt to use it for purposes other than those indicated in this manual. Any service and repair work must be performed only by an authorized service technician (ACTIVESHOP Ltd.).
3. Do not install or operate the device near liquids, wet places or with wet hands - so that no liquids get into the device.
4. Immediately remove the plug from the outlet and contact the authorized service provided by ACTIVESHOP Ltd. in the following cases:
 - a) liquid has entered the device,
 - b) the device emits a strange odor, smoke or makes strange sounds,
 - (c) the power cord was damaged,
 - (d) the device was knocked over or its housing was damaged.
5. Do not put any objects on the cables. Do not install the unit where someone may step on the power cord.
6. For safety purposes, unplug the power cord from the outlet each time you finish working with the device.
7. Do not insert anything into the opening of the device. If a foreign object gets into the hole, remove the cord from the outlet and contact the distributor or manufacturer.
8. Do not place the device on an unstable cart, shelf or vehicle. If dropped, the device may be damaged.

9. In order to guarantee the established useful life of the device, it is recommended to keep an interval of one minute before pressing the power button again (between switching on and off and vice versa).

10. The power supply must comply with the specifications on the nameplate. Otherwise, there is a risk of incorrect operation of the device its damage or even burning.

NOTES:

1. In case of damage to the power cord or other malfunctions, contact an authorized service center - this will avoid danger.

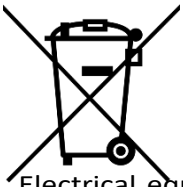
2. This equipment may be used by children at least 8 years of age and by persons with impaired physical and mental capabilities and persons with inexperience and lack of familiarity with the equipment, if supervision or instruction is provided regarding the use of the equipment in a safe manner so that the associated risks are understood.

3. The device is not intended for play by children. Do not allow children to play with the device.

4. Do not leave the device unattended when children or persons without sufficient knowledge of how to use the device are in the vicinity.

5. This electrical appliance is not a toy. Improper use or contact with the electrical appliance may pose a health risk or lead to death, so use and store the appliance out of the reach of children.

DISPOSAL OF THE DEVICE



Dispose of used electrical appliances, fixtures and packaging to raw material reprocessing centers in accordance with environmental protection principles. Electrical appliances should not be disposed of in household waste containers. Follow the rules for discarding this type of equipment. In order to protect the environment in accordance with Directive 2012/19/EC on waste electrical and electronic equipment, used equipment

Electrical equipment should be collected separately, and taken to collection points for waste electronic and electrical equipment.

At the end of their useful life, as well as old appliances contain full-value recyclable components, so they should be handed over for recycling. Therefore, they should be handed over to appropriate collection points, as well as they can also be handed over to ACTIVESHOP Ltd.

STORAGE AND TRANSPORT

The device should be transported at a temperature in the range of (-) 20 °C to (+) 50 °C only in its original packaging. Store the device in a well-ventilated and relative humidity of no more than 75%. Operating temperature from (+) 10 °C to (+) 40 °C. During storage and transportation processes, the device must not be thrown or dropped, exposed to mechanical shocks or atmospheric agents.